

Mark schemes

Q1.

B

a decrease in the charge held on the capacitor plates.

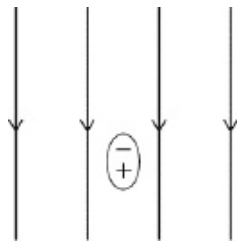
[1]**Q2.**

B

the charge stored on a capacitor consisting of two parallel plates of area 1 m^2 separated by 1 m when the potential difference between the plates is 1 V

[1]**Q3.**

A

**[1]****Q4.**

A

[1]**Q5.**

C

[1]**Q6.**

C

[1]**Q7.**

C

[1]**Q8.**

D

[1]